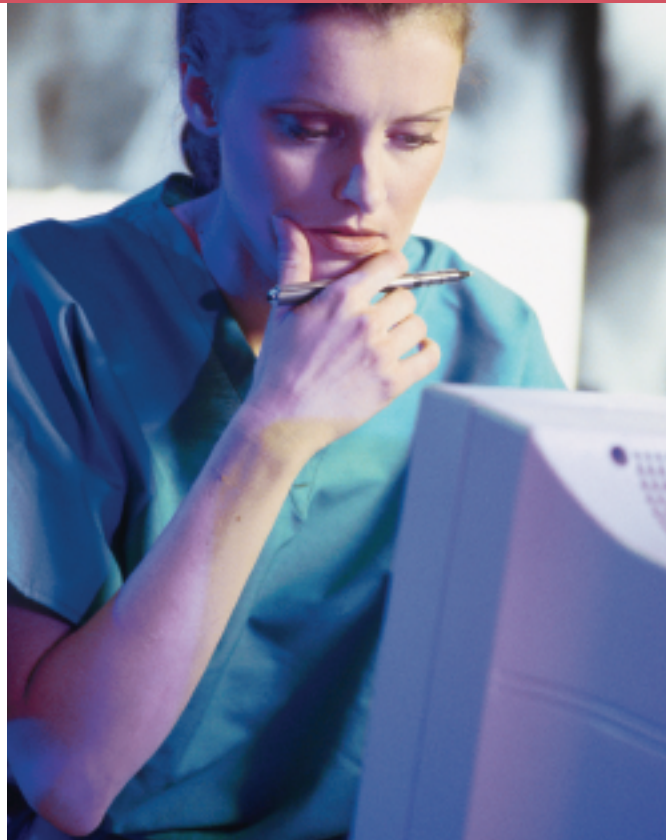


CareVital™

www.SeniorHealthAdvantage.com

Improving patient health
through remote vital sign monitoring

Your Senior Health Advantage provider is:



CareVital™ is an easy-to-use home monitoring system for vital signs that creates an improved line of communication between the patient and healthcare professionals.

Managing their health
one heartbeat at a time.

The CareVital monitoring system enables your patients to send their vital sign readings from the comfort of their own homes without the need for an extra home nurse visit or a trip to the doctor's office. The CareVital unit utilizes a phone line and sends vital sign data and subjective symptom information from the home directly to a secure website. Healthcare professionals can check this site 24 hours a day and monitor the patient's vital signs. All the patient has to do is take their vital signs and answer preselected questions about symptoms over the telephone.

Senior Health Advantage is a service of



Senior
HEALTH
Advantage®
NETWORK

What are the benefits of CareVital in-home monitoring services?

For the physician:

- Helps the physician to be more proactive in patient care, allowing for adjustments to the treatment plan or medications before emergencies occur.
- Makes objective and subjective clinical patient data from the patient's home available to the physician through a secure website 24 hours a day.
- Up to 83% fewer hospital readmissions during critical period.
- Breaks the cycle of emergency care and hospital readmissions for patients with chronic illness such as CHF, diabetes, etc.
- Creates strong patient satisfaction and loyalty to the physician's practice.

For the home health agency:

- Lowers nursing costs while improving outcomes.
- More effective and immediate interventions justify home healthcare readmissions.
- Allows using agency to clinically monitor and manage all patients seven days a week in addition to scheduled visits.
- Ensures continuity of care and empowers nursing staff by providing trend-over-time data.
- Improves communication between all members of the care team.

What clinical data can CareVital collect and transmit?

Daily and PRN measurements can be taken of heart rate, blood pressure, weight, blood glucose levels, peak flow and FEV₁. In addition, up to five symptom questions selected by a healthcare professional allow for a subjective assessment of patient status. These questions and measurements provide the healthcare professional with information about the patient's health and allow for more proactive care.



How does CareVital affect follow-up office visits?

- Prompt communication of abnormal parameters and routine trend reports allow the healthcare professional to detect subtle changes in clinical status before a patient's condition deteriorates.
- This approach encourages follow-up visits to focus on the patient's current status and therefore be more effective in the ultimate care of the patient.

Which patients should be considered for CareVital?

Recommended criteria include patients with:

- Recent hospitalization or ER visit for existing chronic conditions.
- Any condition requiring frequent monitoring or trending of vital signs to facilitate clinical management.
- Chronic care patients who can avoid admission to alternative living facilities if monitored at home.
- History of poor compliance with diet, medications, or self-monitoring of chronic conditions.

The following patient types are not recommended for CareVital:

- Patients who are combative or have other behavioral problems that would limit compliance.
- Patients who are physically or cognitively unable to follow simple instructions and have no caregiver to assist them.

What is the cost to my patients for CareVital?

- Medicare-eligible patients who are referred to participating home healthcare agencies and meet their selection criteria will be monitored at no cost.
- Patients not covered by Medicare or a participating insurance provider have the option of being monitored for a nominal fee.

Angie—age 54
“A year ago, I was diagnosed with congestive heart failure. I didn't want to have daily nurse visits, but didn't know of an alternative.”



“My doctor suggested I use CareVital. He said I would still have my independence, and he could keep a close eye on me.”



“It's been a year and I still haven't had to go back to the hospital. It's so nice to be able to stay at home but still let my doctor know what's going on.”

